

HoldenCopley

PREPARE TO BE MOVED

Coppice Road, Arnold, Nottinghamshire NG5 7HH

Guide Price £375,000 - £395,000

Coppice Road, Arnold, Nottinghamshire NG5 7HH



GUIDE PRICE £375,000 - £395,000

SPACIOUS FAMILY HOME WITH ENDLESS POTENTIAL...

This four-bedroom detached house offers generous accommodation throughout and is bursting with potential, making it the perfect purchase for a family buyer looking to create their dream home. Situated in a popular location, the property benefits from being within close proximity to a wide range of local amenities, excellent transport links, and great school catchments – ideal for growing families. Internally, the ground floor comprises a porch and an entrance hall, a convenient ground floor W/C, a spacious living room open plan to the dining area, a versatile family room, a fitted kitchen, a useful utility room, and a garage – providing ample storage or potential for conversion. Upstairs, the first floor hosts four well-proportioned bedrooms, a three-piece family bathroom suite, and access to a boarded loft. Externally, the property boasts a block-paved driveway providing off-road parking for up to four vehicles, a well-maintained front garden with lawn, and access into a covered carport. To the rear is a private and established garden, featuring a paved patio area, a lawn, and a range of mature shrubs and trees, offering a peaceful outdoor retreat. This property offers a fantastic opportunity for buyers to update and personalise the space to their own taste, with plenty of potential to create a beautiful and bespoke family home.

NO UPWARD CHAIN





- Detached Family Home
- Four Bedrooms
- Well Appointed Fitted Kitchen
- Open Plan Reception Room & Family Room
- Ground Floor W/C
- Three Piece Bathroom Suite
- Off-Road Parking & Garage
- Private Enclosed Rear Garden
- Popular Location
- No Upward Chain





GROUND FLOOR

Porch

7’3" × 2’7" (2.23m × 0.80m)
The porch has tiled flooring, a built-in cupboard with a drawer and a sliding patio door.

Entrance Hall

11’10" × 6’10" (3.62m × 2.10m)
The entrance hall has carpeted flooring and stairs, under the stairs storage, a radiator and a single door providing access into the accommodation.

W/C

6’2" × 2’8" (1.88m × 0.83m)
This space has a low level flush W/C, a wall-mounted wash basin, wood-effect flooring, partially tiled walls and an extractor fan.

Living Room

15’1" × 11’10" (4.62m × 3.62m)
The living room has a double-glazed window to the front elevation, carpeted flooring, a radiator, a feature fireplace with a decorative surround, wall-mounted light fixtures, a TV point and open access into the dining room.

Dining Room

13’0" × 8’10" (3.98m × 2.71m)
The dining room has carpeted flooring and a radiator.

Family Room

12’7" × 9’4" (3.85m × 2.85m)
The family room has a UPVC double-glazed window to the side elevation, carpeted flooring, a radiator and double French doors providing access out to the garden.

Kitchen

17’6" × 8’10" (5.34m × 2.71m)
The kitchen has a range of fitted base and wall units with worktops, an integrated double oven, an electric hob, a stainless steel sink and a half with a drainer, space and plumbing for a dishwasher, space for a fridge-freezer, tiled flooring, partially tiled walls, wooden beams to the ceiling and a double-glazed window to the rear elevation.

Utility Room

7’11" × 6’5" (2.42m × 1.97m)
The utility room has a range of fitted base and wall units with worktops, a stainless steel sink, space and plumbing for a washing machine and tumble dryer, carpeted flooring, tiled walls, a wall-mounted boiler, a double-glazed window to the rear elevation and a single door providing side access.

FIRST FLOOR

Landing

15’5" × 6’11" (4.71m × 2.12m)
The landing has a double-glazed window to the front elevation, carpeted flooring, a built-in cupboard, access into the boarded loft via a drop-down ladder and provides access to the first floor accommodation.

Master Bedroom

15’0" × 10’5" (4.58m × 3.19m)
The main bedroom has a double-glazed window to the front elevation, carpeted flooring, a radiator and fitted wardrobes with over the head cupboards and a dressing table with drawers.

Bedroom Two

10’11" × 10’5" (3.35m × 3.20m)
The second bedroom has a double-glazed window to the rear elevation, carpeted flooring, a radiator and fitted wardrobes with over the head cupboards, a dressing table with drawers and a headboard with bedside tables.

Bedroom Three

8’4" × 8’2" (2.55m × 2.49m)
The third bedroom has double-glazed windows to the front and side elevations, carpeted flooring, a radiator and fitted wardrobes with over the head cupboards and a dressing table with drawers.

Bedroom Four

8’6" × 8’2" (2.61m × 2.49m)
The fourth bedroom has a double-glazed window to the rear elevation, carpeted flooring, a radiator and fitted wardrobes.

Bathroom

8’11" × 5’4" (2.74m × 1.63m)
The bathroom has a low level flush W/C, a pedestal wash basin, a fitted bath, carpeted flooring, tiled walls, a radiator, recessed spotlights and a double-glazed obscure window to the rear elevation.

OUTSIDE

Front

To the front is a block paved driveway, a garden with a lawn and access into the carport.

Rear

To the rear is a private garden with a fence panelled boundary, a paved patio, a lawn and mature shrubs and trees.

Garage

15’11" × 8’5" (4.87m × 2.57m)
The garage has lighting, fitted wall units, power points, a single door and an electric garage door.

ADDITIONAL INFORMATION

Electricity – Mains Supply
Water – Mains Supply
Heating – Gas Central Heating – Connected to Mains Supply
Septic Tank – No
Broadband Speed - Ultrafast - 1800 Mbps (Highest available download speed) 220 Mbps (Highest available upload speed)
Phone Signal – All 4G, most 5G & some 3G available
Sewage – Mains Supply
Flood Risk – No flooding in the past 5 years
High risk of flooding
Non-Standard Construction – No
Any Legal Restrictions – No
Other Material Issues – No

DISCLAIMER

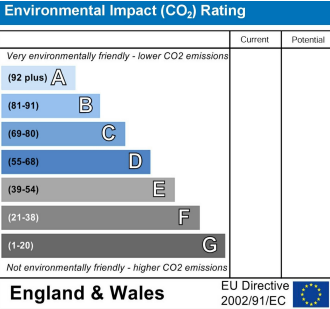
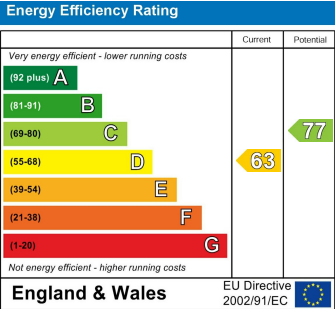
Council Tax Band Rating - Gedling Borough Council - Band D
This information was obtained through the directgov website. HoldenCopley offer no guarantee as to the accuracy of this information, we advise you to make further checks to confirm you are satisfied before entering into any agreement to purchase.

The vendor has advised the following:
Property Tenure is Freehold

Agents Disclaimer: HoldenCopley, their clients and employees I: Are not authorised to make or give any representations or warranties in relation to the property either here or elsewhere, either on their own behalf or on behalf of their client or otherwise. They assume no responsibility for any statement that may be made in these particulars. These particulars do not form part of any offer or contract and must not be relied upon as statements or representations of fact. 2: Any areas, measurements or distances are approximate. The text, photographs and plans are for guidance only and are not necessarily comprehensive. It should not be assumed that the property has all necessary planning, building regulation or other consents and HoldenCopley have not tested any services, equipment or facilities. Purchasers must make further investigations and inspections before entering into any agreement.

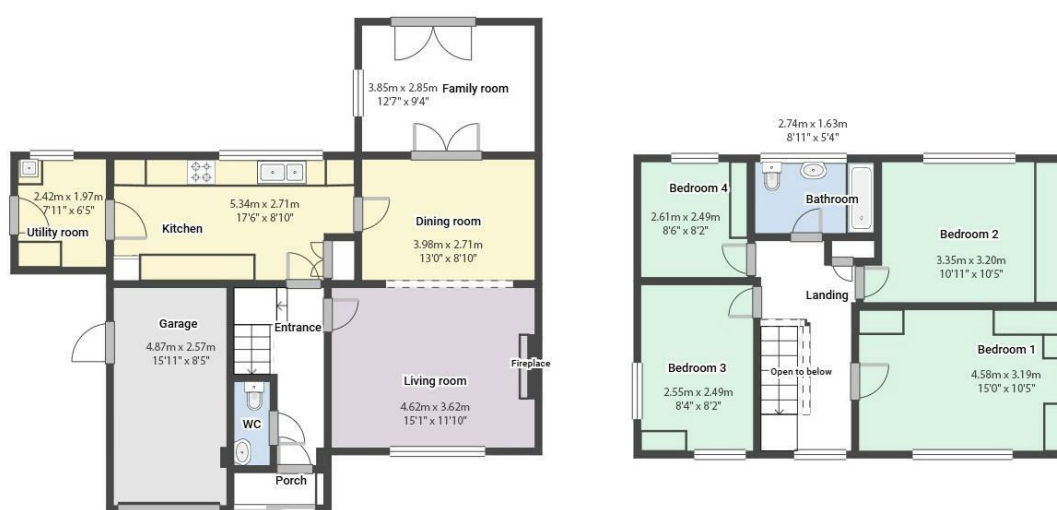
Purchaser information -The Money Laundering, Terrorist Financing and Transfer of Funds(Information on the Payer) Regulations 2017(MLR 2017) came into force on 26 June 2017. HoldenCopley require any successful purchasers proceeding with a property to provide two forms of identification i.e. passport or photocard driving license and a recent utility bill or bank statement. We are also required to obtain proof of funds and provide evidence of where the funds originated from. This evidence will be required prior to HoldenCopley removing a property from the market and instructing solicitors for your purchase.

Third Party Referral Arrangements - HoldenCopley have established professional relationships with third-party suppliers for the provision of services to Clients. As remuneration for this professional relationship, the agent receives referral commission from the third-party companies. Details are available upon request.



Coppice Road, Arnold, Nottinghamshire NG5 7HH

HoldenCopley
PREPARE TO BE MOVED



FLOORPLAN IS FOR ILLUSTRATIVE PURPOSES ONLY

All measurements walls, doors, windows, fittings and appliances, their sizes and locations are an approximate only. They cannot be regarded as being a representation by the seller nor their agent and is for identification only. Not to scale.
© HoldenCopley

0115 8969 800

26 High Street, Arnold, Nottinghamshire, NG5 7DZ

info@holdencopley.co.uk

www.holdencopley.co.uk

Agents Disclaimer: HoldenCopley, their clients and employees I: Are not authorised to make or give any representations or warranties in relation to the property either here or elsewhere, either on their own behalf or on behalf of their client or otherwise. They assume no responsibility for any statement that may be made in these particulars. These particulars do not form part of any offer or contract and must not be relied upon as statements or representations of fact. 2: Any areas, measurements or distances are approximate. The text, photographs and plans are for guidance only and are not necessarily comprehensive. It should not be assumed that the property has all necessary planning, building regulation or other consents and HoldenCopley have not tested any services, equipment or facilities. Purchasers must make further investigations and inspections before entering into any agreement.